

HOUSE  
AND LAND  
PACKAGES



JOE MIJATOVIC  
PROJECTS



Rendered brochure may depict fittings, fixtures or features not included. Façade is used for marketing purposes only

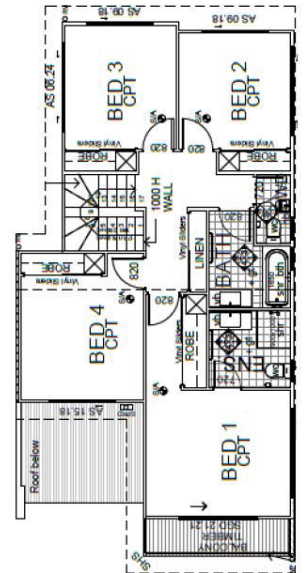
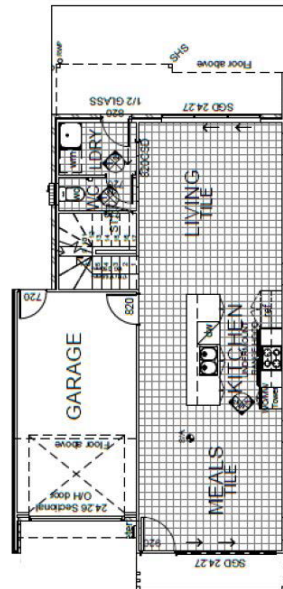
# CARINA TERRACE PACKAGE FROM **\$911,019**

4 2 1 1

Land Size 197m<sup>2</sup> | Home Area 171m<sup>2</sup>

## PACKAGE INCLUSIONS

- Platinum Inclusions
- Stone Benchtops to Kitchen & Bathrooms
- Dishwasher
- Floor Coverings
- Window Coverings
- Raised Ceiling to lower & upper levels
- Ducted A/C
- Ceiling Fans
- Fully Fenced
- Low Maintenance Landscaping & Lawns





Facade image may depict features such as landscaping, timber decking, furniture, window treatments and lighting which are not included in the package price. Image is for illustrative purposes only.

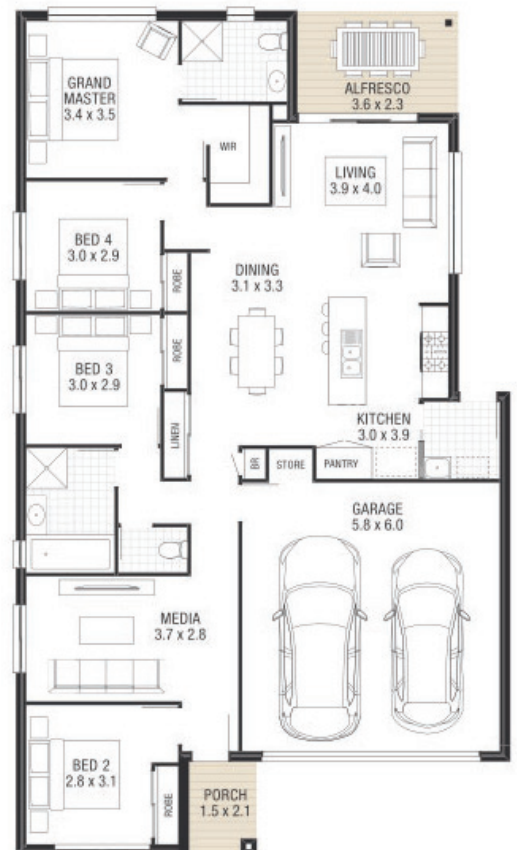
# HEATHWOOD HOME & LAND FROM **\$863,200**

4 2 2 2

Land Size 400m<sup>2</sup> | Home Area 184m<sup>2</sup>

## PACKAGE INCLUSIONS

- Clothesline and lettebox for convenient living
- Colorbond steel roof for added street appeal
- Complete siteworks for a solid new home start
- Durable driveway and path to your front door
- Elegant stone benchtops to your kitchen
- Generous alfresco inspires outdoor entertaining
- Large upright cooker for the kitchen whiz
- Modern designer tiles to complement your style
- Plush carpet for a comfort boost to your home
- Ducted air conditioning for year round comfort





Rendered brochure may depict fittings, fixtures or features not included. Façade is used for marketing purposes only

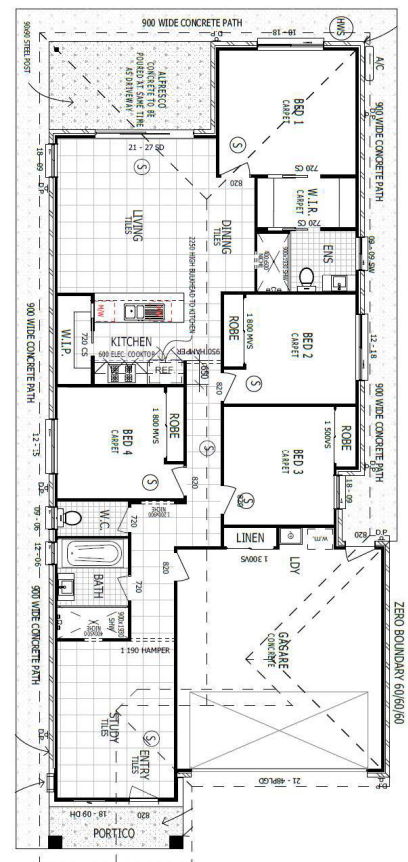
# MORAYFIELD HOME & LAND FROM **\$659,300**

4 2 2 2

Land Size 336m<sup>2</sup> | Home Area 184m<sup>2</sup>

## PACKAGE INCLUSIONS

- 900mm wide path around entire house
- Exposed Aggregate Driveway
- Stone Benchtops to Kitchen & Bathrooms
- Dishwasher
- Tiles to main living & wet areas
- Window Coverings
- Safety Screens
- Airconditioning
- Ceiling Fans to all bedrooms
- Fully Fenced
- Low Maintenance Landscaping & Lawns





Rendered brochure may depict fittings, fixtures or features not included. Façade is used for marketing purposes only

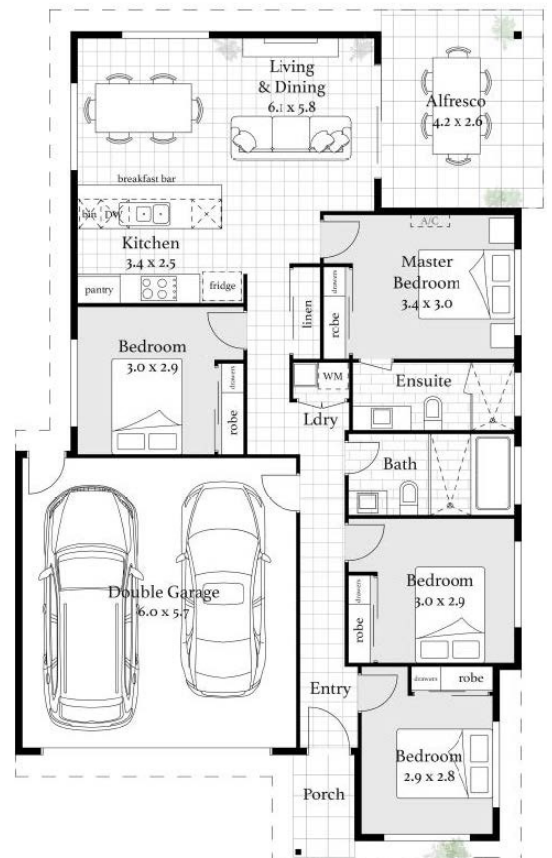
# NARANGBA HOME & LAND FROM **\$719,900**

4 2 2 1

Land Size 347m<sup>2</sup> | Home Area 157m<sup>2</sup>

## PACKAGE INCLUSIONS

- 920mm Feature Entry Door
- Exposed Aggregate Driveway
- Stone Benchtops to Kitchen & Bathrooms
- Dishwasher
- Floor Coverings
- Window Coverings
- Safety Screens
- Airconditioning
- Ceiling Fans
- Fully Fenced
- Low Maintenance Landscaping & Lawns





Rendered brochure may depict fittings, fixtures or features not included. Images are used for marketing purposes only

# SEVEN HILLS HOME & LAND FROM **\$669,585**

2  2  2  1 

Floor area 138m<sup>2</sup>

## PACKAGE INCLUSIONS

- Ducted Airconditioning
- Tiled Balcony & Wet Areas
- Stone Benchtops to Kitchen & Bathrooms
- Stainless Steel European Appliances
- Engineered Timber flooring to living areas
- Carpet to bedrooms
- Window Coverings
- Clothes Dryer

## Complex Features

- BBQ Area
- Gym, Sauna & Steam Room
- Swimming Pool
- Communal Lounge





Rendered brochure may depict fittings, fixtures or features not included. Façade is used for marketing purposes only

# SPRING MOUNTAIN HOME & LAND FROM

## \$669,585

3  2  2  1 

Land Size 315m<sup>2</sup> | Home Area 171m<sup>2</sup>

### PACKAGE INCLUSIONS

- Airconditioning
- Tiled Alfresco
- LED lighting
- Exposed Aggregate Driveway
- Stone Benchtops to Kitchen & Bathrooms
- Dishwasher
- Tiles to main living & wet areas
- Carpet to bedrooms
- Window Coverings
- Epoxy flooring to garage
- Ceiling Fans to all bedrooms
- Fully Fenced
- Low Maintenance Landscaping & Lawns





JOE MIJATOVIC  

---

0487 395 529  
joe.m@imageproperty.com.au

